

CAT 6 LAN CABLE

Cabac Cat6 LAN cable is available in solid conductor cable for horizontal and backbone cabling applications between patch panels, distributors and consolidation points and wall outlets. A stranded conductor version is also available for cabling applications that require flexible cables, such as patch leads.

Both cable types are designed, manufactured and tested in compliance with AS/CA S008 and ANSI/TIA 568-C.2 standards for performance, safety and reliability.

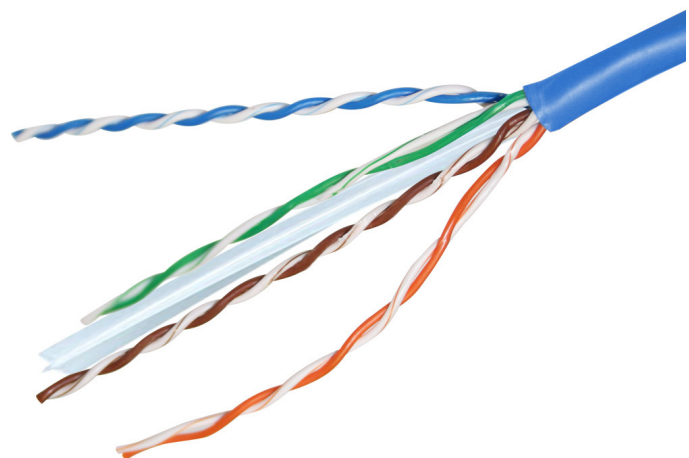
COMPLIANCE AND SAFETY

RCM Compliant: tested to AS/CA S008:2010

- ANSI/TIA-568-C.2
- ISO/IEC 11801
- ROHS compliant

SPECIFICATIONS

FEATURE	SOLID	STRANDED
Number of Pairs	4	
Conductors Material	Bare Copper	
Conductor Size	23 AWG	24 AWG(7/0.20)
Insulation Material	PE	
Crossweb Separator	Yes	
Jacket Material	PVC	
Nominal Outer Diameter	6.0mm	



ORDERING INFORMATION

	SOLID	STRANDED
Part No:	C6UTP	C6UTPS

In support of our policy of continuous product improvement we reserve the right to change materials and specifications without notice. Drawings, where used, are not to scale. All dimensions are in millimetres and sizes given are approximate. Where possible, technical MSDS data sheets are made available on the website. All products should be installed and used in accordance with manufacturer's instructions provided. Warning: products may be the subject of registered designs and patents. Refer to website for terms and conditions on warranty.