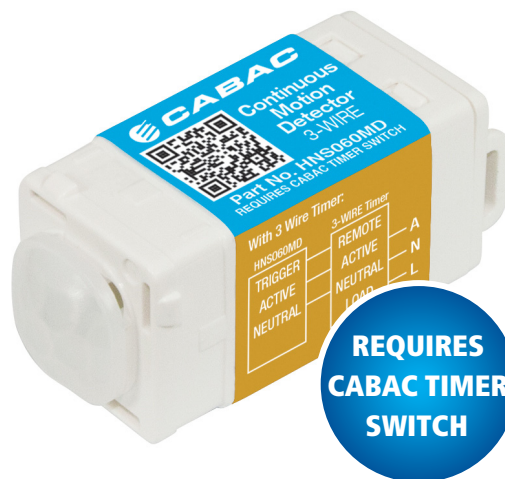


## HNS060MD OWNER'S MANUAL

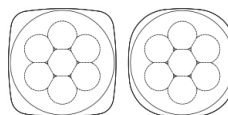


Scan our QR code  
with your phone to go  
directly to our website  
for technical information



### 1. FEATURES

- Switch the light ON touch free
- Detects motion up to 2m from the sensor and will trigger a Cabac S-Click timer switch to turn the light ON for a programmed amount of time
- Ideal for spaces with no natural light like office bathrooms, storerooms and laundries
- Must be used with Cabac S-Click range 3-Wire Timer switches
- Turns lights ON when motion is detected regardless of light level (no light sensor)
- Continually restarts the timer when movement is detected
- Timer switch remains usable as normal
- Uses timer switch to control time
- Extremely low <100 mW standby power consumption
- Compatible with HPM and Clipsal wall plates – lenses included



### 2. OPERATING CONDITIONS

- Operating Voltage: 220 – 240Va.c. 50Hz
- Operating Temperature: 0 to +50°C
- Certified Standards: CISPR15, AS/NZS 3100
- Maximum Load: As per connected Cabac Timer Switches

Note: Operation at temperature, voltage or load outside of the specifications may cause permanent damage to the unit.

### 3. COMPATIBLE SWITCHES

The HNS060MD must be used with one of the timer switches listed below. It cannot be used on its own.

- HNS440TM Minute Timer 3-Wire
- HNS450TM Hourly Timer 3-Wire

### 4. OPERATION

The HNS060MD is a passive infra-red motion detector that detects motion up to 2m from the sensor. As long as the HNS060MD detects motion it will continually restart the timer. You may hear a clicking sound within the unit but this is normal. The HNS060MD is a sensor and if motion is detected will trigger the Cabac S-Click timer to turn the light ON - offering both hands free switching and power savings. See section 3 for compatible products.

The light can always be turned on directly at the timer switch. The length of time the light stays on is set on the timer switch.

**Note:** This manual was correct at the time of manufacture. For the latest version of the manual and any technical or safety updates refer to the website:- [cabac.com.au](http://cabac.com.au), [cabac.co.nz](http://cabac.co.nz) or scan the QR code with a mobile phone.

## 5. INSTALLATION INSTRUCTIONS

The HNS060MD is to be installed as part of a fixed wire electrical installation. By law such installations must be made by an electrical contractor or similarly qualified person. Avoid excessive force on terminal block during installation.

### 5.1 WIRING

- Disconnect power at the circuit breaker before any electrical work.
- Insert Cabac S-Click Timer Switch into faceplate as per instructions in its manual.
- Insert HNS060MD into faceplate and fit the appropriate lens, as shown in Figure 1
- Connect the HNS060MD and Cabac S-Click Timer Switch as per the wiring diagram in Figure 2 for 3-wire timer (HNS440TM/ HNS450TM) installation.
- Fit faceplate with the HNS060MD and Cabac S-Click Timer onto wall.
- Reconnect power at the circuit breaker once installation is complete.
- After installation wait approximately 30 to 40 seconds for the HNS060MD to complete start-up sequence. LED will flash during this start-up sequence.
- Trigger the motion detector and ensure the detector and timer operate correctly.

**NOTE:** The HNS060MD is designed for indoor use. It is not rated for outdoor installation.

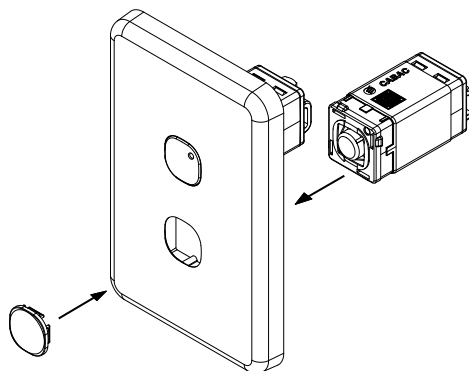


Figure 1: Installation of HNS060MD

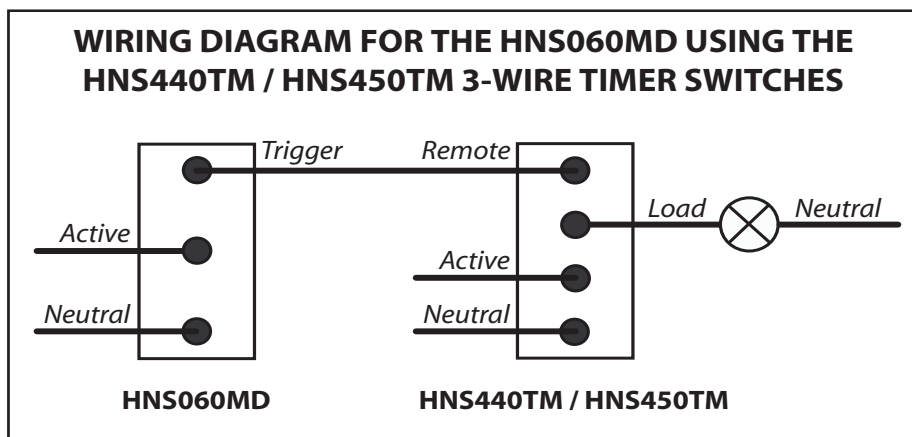


Figure 2: Wiring Diagram for the HNS060MD using either HNS440TM/HNS450TM 3-Wire Timer Switches

## 5.2 MULTIPLE HNS060MD WIRING

- Multiple HNS060MD can be used to start a single Cabac S-Click 3-Wire Timer.
- Refer to Figure 3 for the wiring of multiple HNS060MD with a single Cabac S-Click 3-Wire Timer.
- There is effectively no limit to the number of HNS060MD that can be connected to a single circuit provided the total trigger wire length does not exceed 50m.

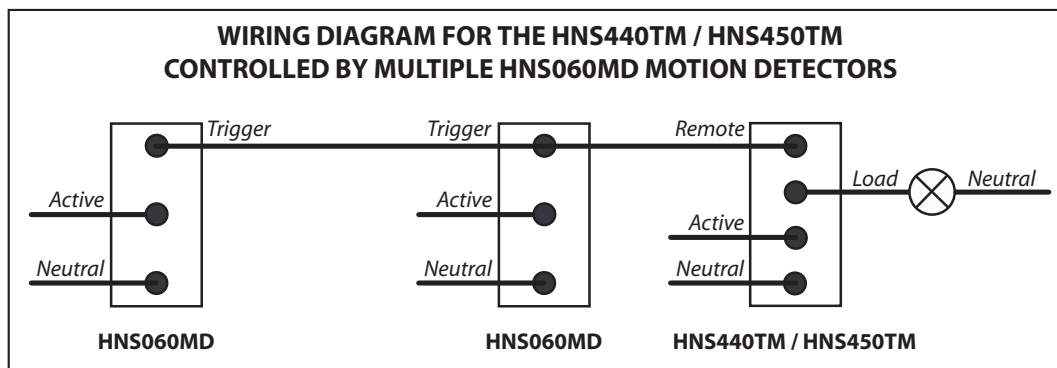
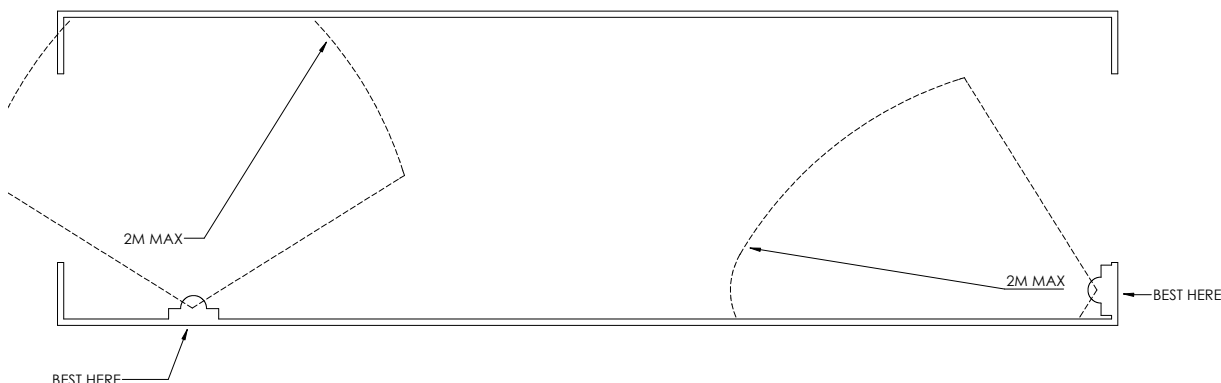


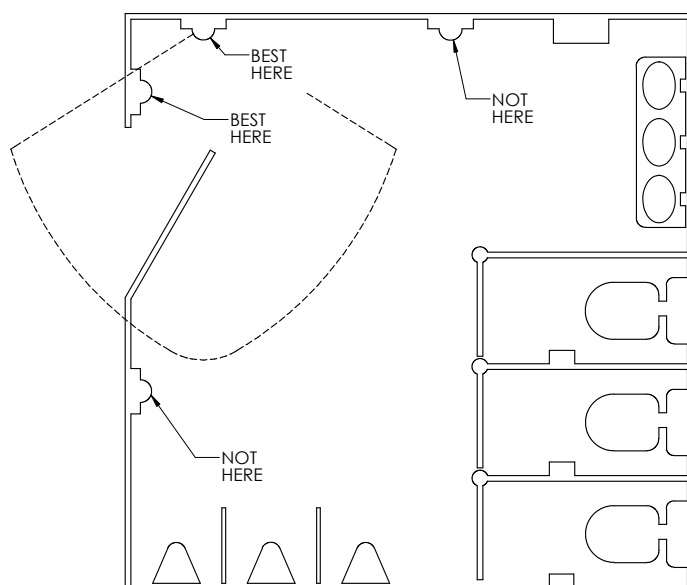
Figure 3: Wiring Diagram with multiple HNS060MD and single Cabac 3-Wire Timer

## 6. SUITABLE PLACEMENT FOR THE HNS060MD

### 6.1 SUGGESTED HALLWAY LOCATIONS



### 6.2 SUGGESTED ROOM LOCATIONS



## **7. IMPORTANT SAFETY WARNINGS**

### **7.1 LOAD REPLACEMENT**

- It should be assumed that even when OFF, mains voltage will still be present at the lamp fitting. Mains power should be disconnected at the circuit breaker before replacing faulty lamps.

### **7.2 HNS060MD INSTALLATION**

- The HNS060MD is to be installed as part of a fixed wire electrical installation. By law such installations must be made by an electrical contractor or similarly qualified person. Avoid excessive force during installation.

### **7.3 LOW READING DURING INSULATION BREAKDOWN TEST**

- The HNS060MD is a solid state device. Therefore a low reading may be observed when conducting insulation breakdown test on the circuit.

### **7.4 CLEANING**

- Clean only with a damp cloth. Do not use abrasives or chemicals.

## **8. TROUBLESHOOTING**

### **8.1 LIGHTS DO NOT TURN ON**

- Ensure that the circuit has power by checking the circuit breaker.
- Ensure the lamp(s) is not damaged or broken.
- Ensure the HNS060MD is correctly connected to the the Cabac S-Click Timer Switch.
- Check if HNS060MD indicator LED light switches on when motion is detected.
- The HNS060MD may have been damaged and needs to be replaced.

### **8.2 TIMER HAS POWER BUT MOTION DETECTOR DOESN'T WORK**

- The HNS060MD might not be connected to the timer switch correctly.
- The HNS060MD is obstructed or being interfered with by dirt, furniture or an object.

## **9. WARRANTY AND DISCLAIMER**

CABAC warrant the product against manufacturing and material defect from the date of invoice to the initial purchaser for a period of 12 months. During the warranty period CABAC will replace products that prove to be defective where the product has been correctly installed and maintained and operated within the specifications defined in the product data sheet and where the product is not subject to mechanical damage or chemical attack. The warranty is also conditional on the unit being installed by a licensed electrical contractor. No other warranty is expressed or implied.

CABAC shall not be liable for any direct, indirect, incidental or consequential damages.

**Note: This manual was correct at the time of manufacture. For the latest version of the manual and any technical or safety updates refer to the website:- [cabac.com.au](http://cabac.com.au), [cabac.co.nz](http://cabac.co.nz) or scan the QR code with a mobile phone.**